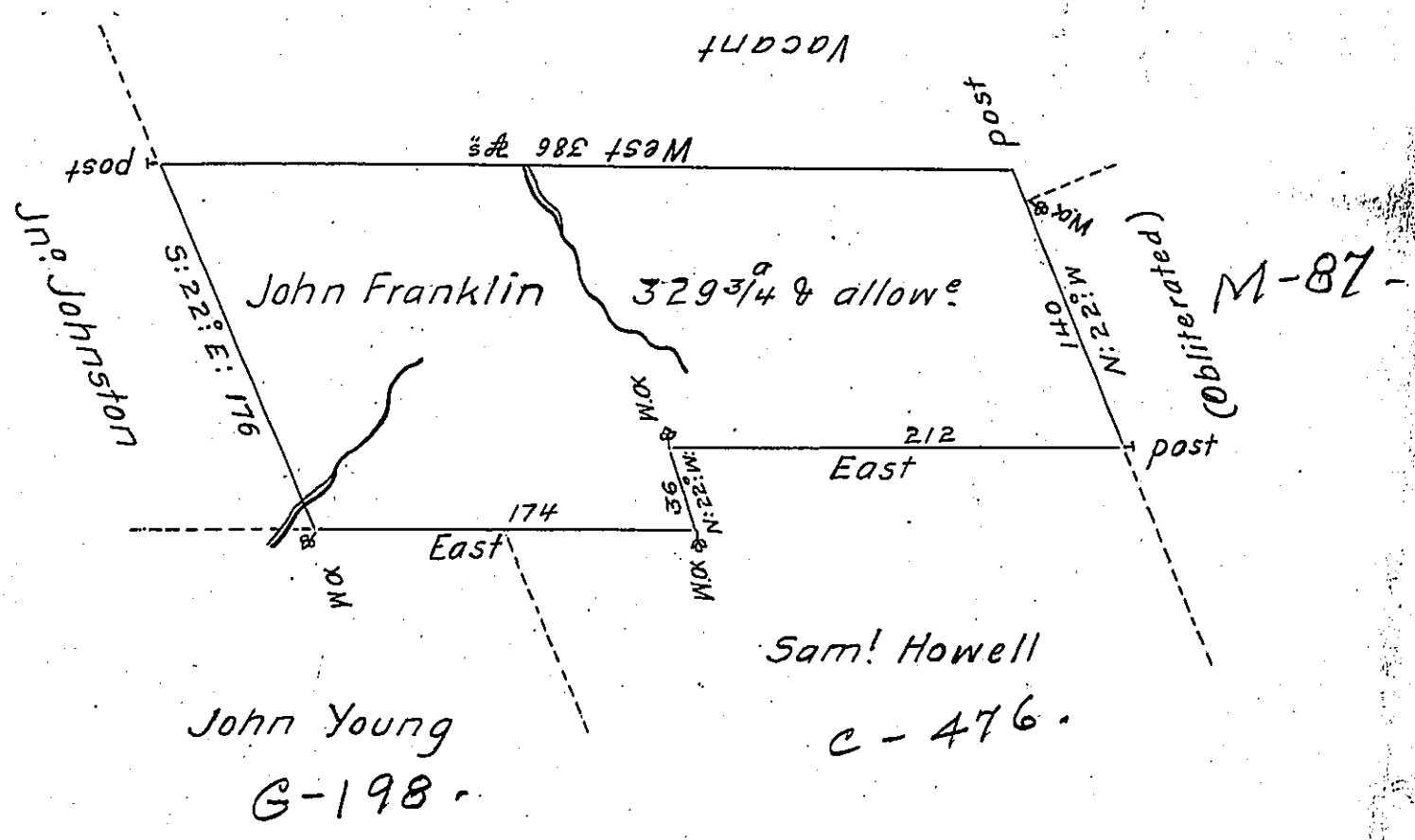


W



A Draught of a Tract of Land Called \_\_\_\_\_ Situate (obl) the Southerly side of the North East branch of Susquehanna River (obl) ining land Surveyed to Samuel Howell & others in the County (obl) Northumberland Containing three hundred and twenty Nine (Obliterated - ) of an Acre besides the usual allowance of (obl - ) for Roads &c Surveyed the 11<sup>th</sup> day of April 1774 For John Franklin In Pursuance of a Warrant dated the 28<sup>th</sup> day of January 1774 ~ by To Cha<sup>s</sup> Stewart D. Y Sur<sup>t</sup> John Lukens Esq<sup>t</sup> Survey<sup>r</sup> Gen<sup>l</sup>

IN TESTIMONY that the above is a copy of the original remaining on file in the Department of Internal Affairs of Pennsylvania, made conformably to an Act of Assembly approved the 16th day of February, 1833, I have hereunto set my Hand and caused the Seal of said Department to be affixed at Harrisburg, this twentieth day of September 1904 ~

*Loac P. Brown*  
 Secretary of Internal Affairs.